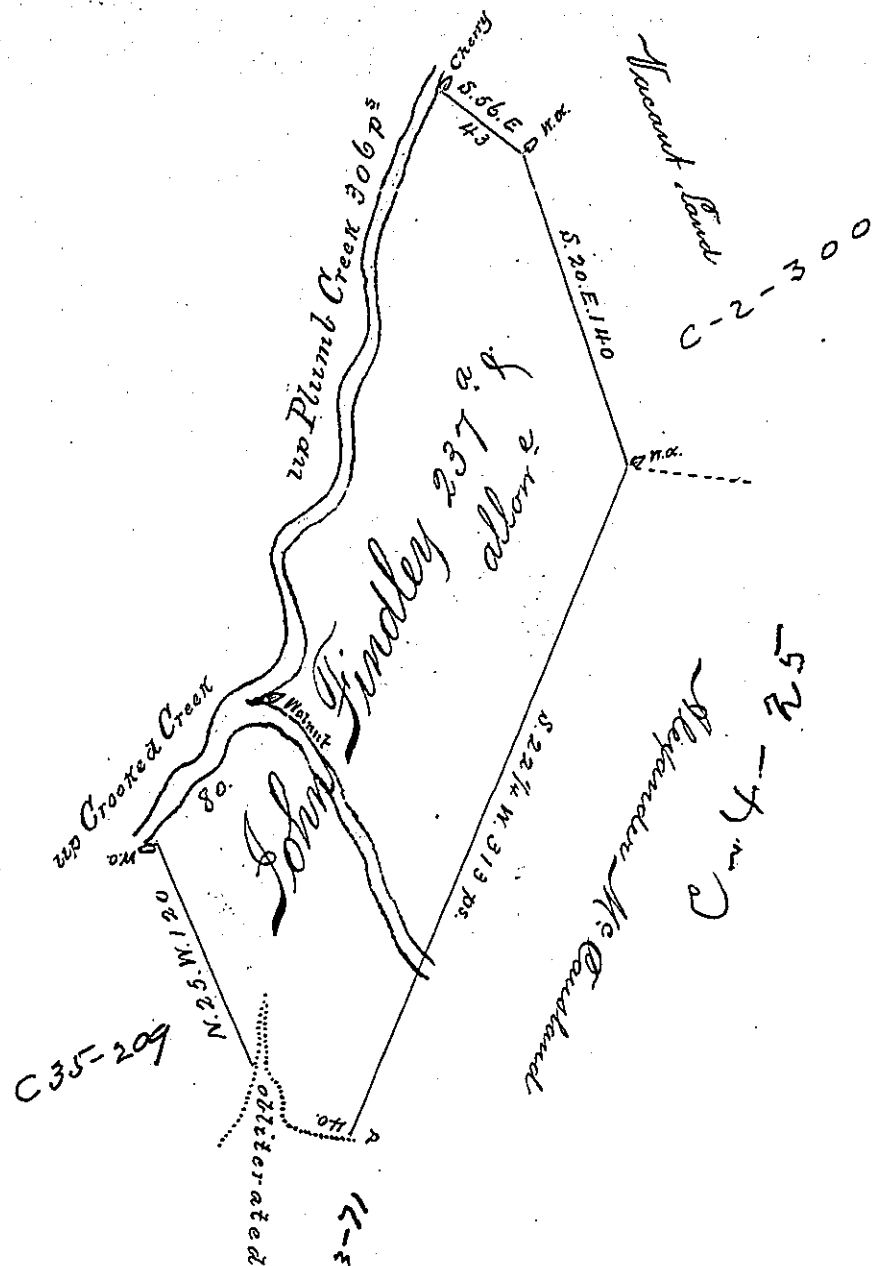


The Courses & Distances  
on the Water

N 47 E	46 ps
N N E	34
N 76 E	34
N 20 W	56
N 56 E	36
North	40
N 24 E	27
North	43
N 17 E	70



The Fork Survey'd to John Findley  
on the 4<sup>th</sup> Day of May 1770 Containing Two  
hundred & thirty seven Acres & the Usual  
Allorance of Six p Ct Situate in Cumber-  
land County By Order of the 3<sup>d</sup> Day of April  
1769 N<sup>o</sup> 1505

p Joshua Elder D.S

non Plum To Armstrong Co

To John Lukens Esq: S. Gen!

IN TESTIMONY that the above is a copy of the original remaining on file in the  
Department of Internal Affairs of Pennsylvania, made con-  
formably to an Act of Assembly approved the 16th day of  
February, 1833. I have hereunto set my Hand and caused  
the Seal of said Department to be affixed at Harrisburg, this

fourth day of August 1896

James W. Fatta  
Secretary of Internal Affairs.